



# WORMING ADVICE

From our local equine vets, 'The Ashbrook Equine Hospital'

## Confused about worming horses???

There are two different methods of worming your horse

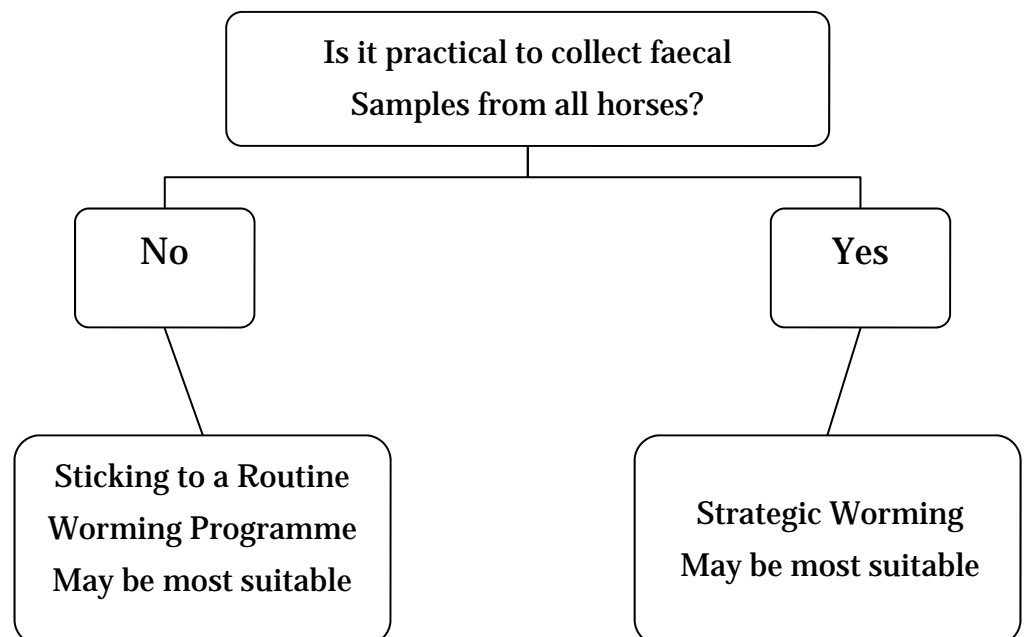
- *Using a routine worming programme*
- *Worming strategically*

**Routine Worming** means you worm your horse throughout the year, at the interval described by the wormer you have chosen to use.

**Strategic worming** means you only worm your horse if a faecal sample indicates that they have a high worm burden.

The enclosed information will help you decide which method will suit your horses and how to implement each programme.

Which worming method is most suitable for your horse?



## Routine Worming Programme

- From one of the drug groups below, chose your wormer and use it throughout the year at the recommended intervals.
  - *Avermectins e.g. ivermectin or moxidectin based wormers*
  - *Pyrantel based wormers*
  - *Benziamadazoles e.g. Fenbendazole based wormers*
- Remember **tapeworm treatment** in the spring and autumn. The autumn dose of tapeworm treatment is best timed after the first frost, and can often be combined with worming for small redworm encysted larvae.
- Remember **small redworm larvicidal** dose between November and January. This can be achieved by using Equest or 5 days of Panacur Equine Guard.

### What about Foals?

---

- Worm at 2 and 6 weeks of age with Panacur Paste if the foal is at high risk of worm exposure
- Worm at 12 weeks of age if the foal is at low risk of worm exposure.
- Keep foaling boxes disinfected
- Tapeworm treatment should only be necessary from the autumn of the year of birth (spring if the foal is very late)

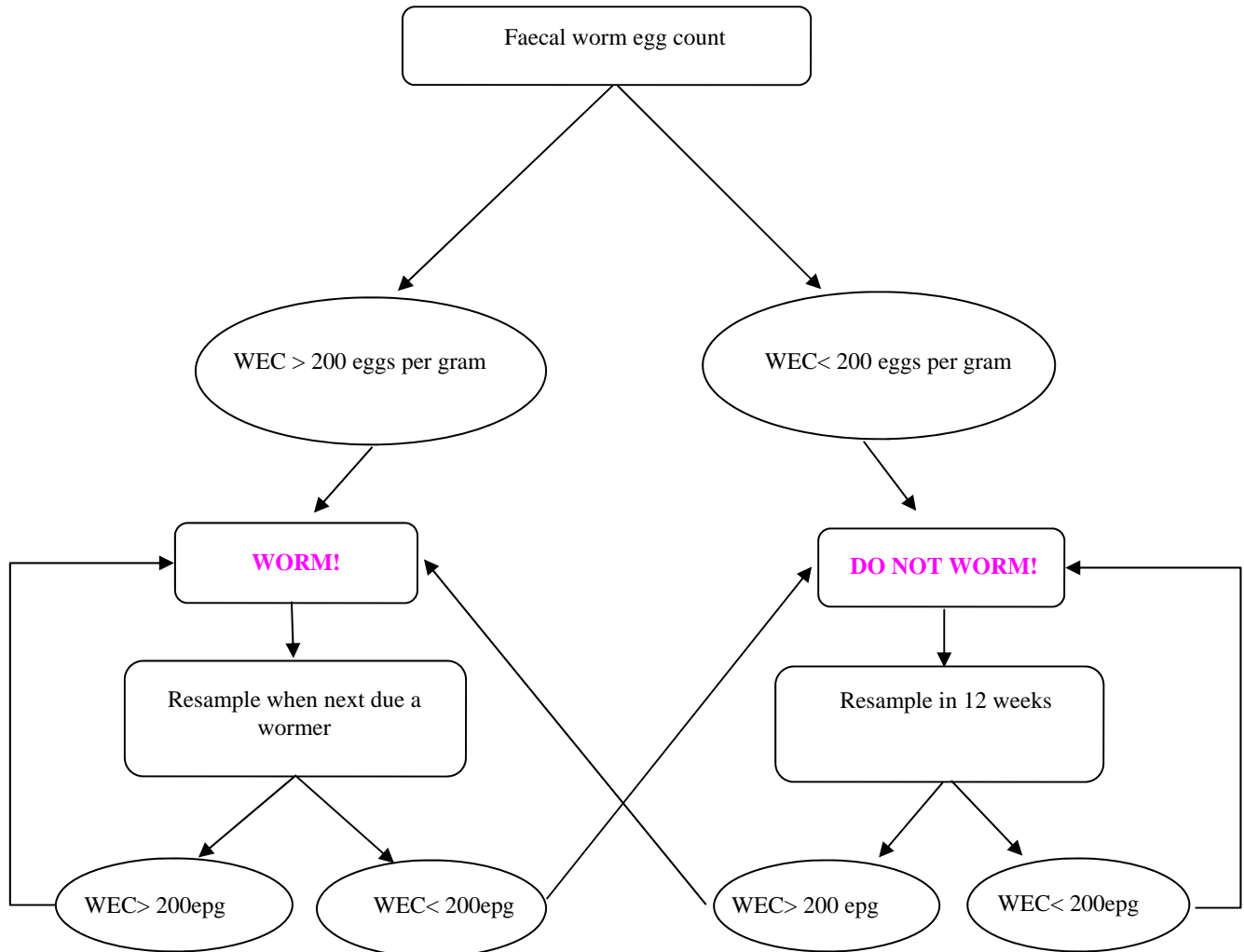
### Is my Routine Worming Programme working?

---

- You can check how effective your worming programme is by collecting a fresh dropping sample 2 weeks after worming and sending it off to your vets or a lab for a worm egg count (WEC).
- You can purchase a *Westgate Worm Count Kit* from our website that allows you to do a WEC via the post.
- A blood sample is required to test for tapeworms and to show tapeworm levels in the previous 12 weeks

# Strategic Worming

Strategic worming means you only worm your horse if the faecal worm egg count (WEC) is greater than 200 eggs per gram. It has been suggested that a low worm burden encourage the horse to improve its own immunity against worms.



If you do decide to use strategic worming, bear in mind that.....

- All horses need to have repeated Worm Egg Counts
- Tapeworm levels are not assessed in a WEC, therefore you need to either worm in spring and autumn for tapeworm or use blood samples to detect tapeworm infection
- Small redworm encysted larvae are not assessed in a WEC, therefore you need to use a larvicidal dose once yearly between November and January

# Optimising any horse worm control programme

## Use Correct Dose for Weight

A weighing tape can be used to give an indication of a horse's weight if you don't have access to horse scales.

Rough guide to weights: Mature Shetland = 100kg

12.2hh Pony	= 250-300kg
Donkey	= 250-300kg
14.2hh Pony	= 400kg
15.2hh TB	= 450-500kg
15hh Cob	= 550kg
16.2hh TB	= 550-600kg
16.2hh Hunter	= 600-650kg
Shires	= 800kg

## New Arrivals to the Yard

- Worm new arrivals for all parasites
- Ideally isolate for 7 days in a stable or separate paddock so any worms excreted do not become a new resident population

## Pasture Management

- Pick up droppings at least twice weekly, especially important if on restricted grazing as worm larvae migrate from droppings onto the surrounding grass
- Rotate paddocks, ideally allow each pasture to rest for 3 months
- Graze with sheep or cattle as horse worms are unable to survive in these animals